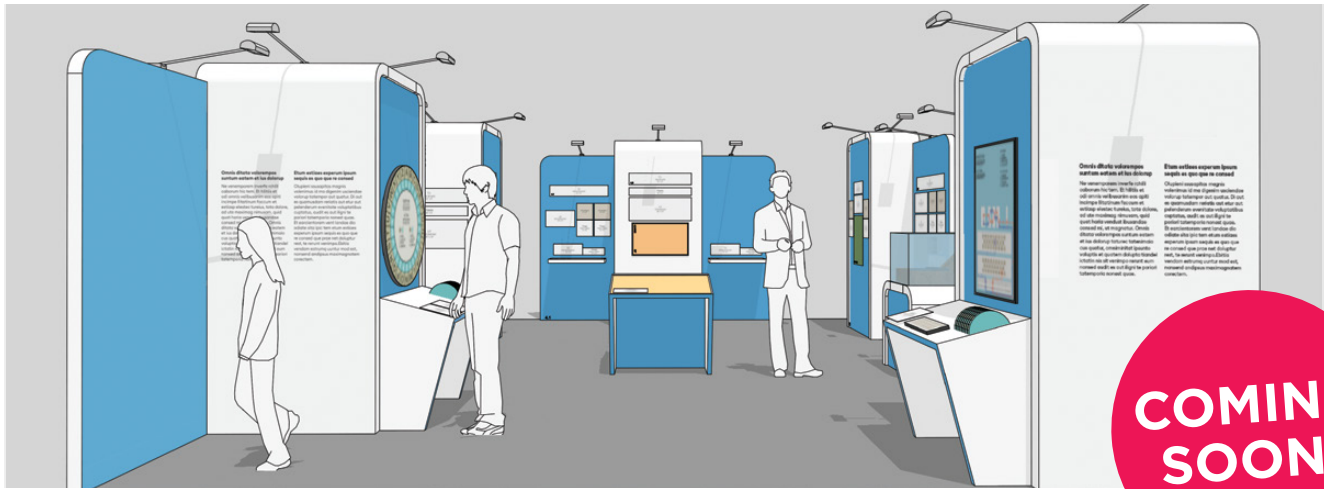


CIPHER • DECIPHER



COMING SOON!

TRAVELLING EXHIBITION

For as long as we've had secret information, individuals and organizations have encrypted and analyzed encrypted communications.

From schoolyard gossip to military plans, ciphers keep secrets out of the wrong hands. The Canada Science and Technology Museum, in partnership with the Canadian Security Establishment, is developing a 500 square foot travelling exhibition about the past and present of communications cryptology. Highlights include an authentic Enigma cipher machine and interactive experiences related to cryptology and cyber security.

The exhibition will help Canadians understand communications cryptology: what it is, how it works, and how it affects our lives. A removable puzzle module allows visitors to see if they possess the skills necessary for working in the field of cryptology.

TARGET AUDIENCE

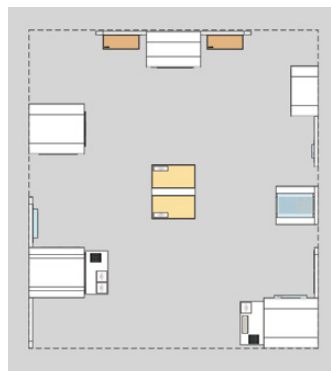
- Intergenerational family groups (with children 8 years of age and up), with a particular focus on groups with girls aged 10-14

LANGUAGES

- All elements are bilingual

EXHIBITION COMPONENTS

- Four content sections consisting of multiple free standing modules
- Mechanical and digital interactives including various puzzles



SUPPORT MATERIAL

- Condition report
- Installation and packing guides

SPACE REQUIREMENTS

- 42 - 46 m² (450 - 500 ft²)
- Multiple configurations possible

SHIPPING & INSTALLATION

- Details to be determined

Insurance

- Borrower must provide an insurance certificate.

FEES

- \$3900 per 12 week period + shipping + applicable taxes

CONTACT

Maren Hackett, Outreach Officer:
613-404-6426
Toll free 1-866-442-4416 (in Canada)
outreach-rayonnement@IngeniumCanada.org
Ingenium – Canada's Museums of Science and Innovation

IngeniumCanada.org



Do you qualify for the Exhibition Circulation Fund through the Department of Canadian Heritage? Search online for "Museum Assistance Program"